

BLANTYRE, GLASGOW

Blantyre

Bespoke Extension & Roof Terrace

A distinctive box extension with an innovative glazed roof terrace.

Marc Allan Construction was awarded this contract through a tender process to deliver this distinctive box extension, incorporating an innovative use of space through a fully glazed enclosed roof terrace.

Working in collaboration with the design team at Abode Architects, we brought the design to life, ensuring all works were delivered in accordance with approved drawings and specifications. A large Velux walk-on rooflight was installed, providing natural light directly into the newly formed living space below.

**Abode
Architects**

DESIGN

**Blantyre,
Glasgow**

LOCATION

**Extension &
Roof Terrace**

SCOPE





THE COMPLETED ROOF TERRACE

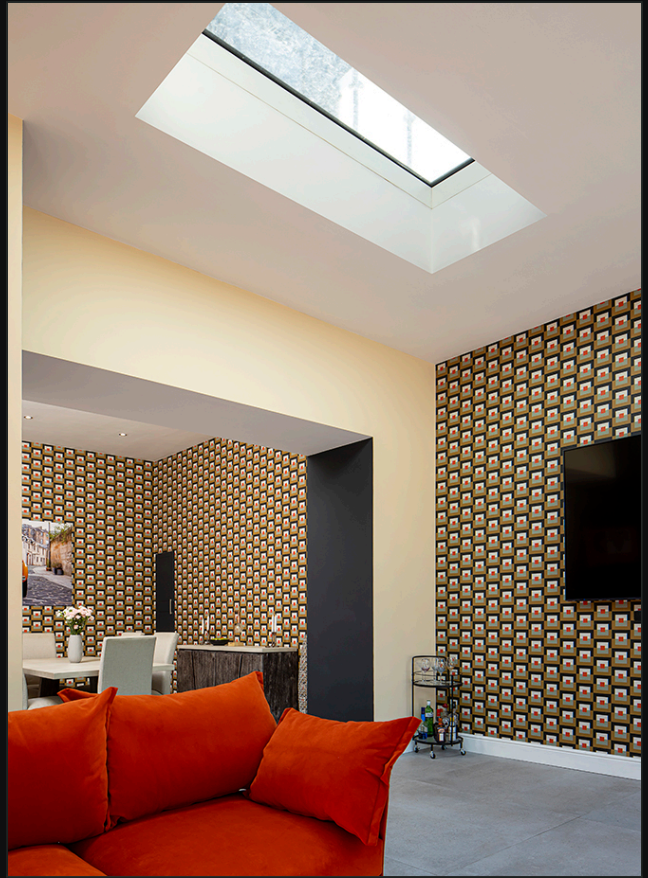
THE BUILD

The construction incorporated structural steel elements to support the front elevation glazing and fixed window above the sliding doors. The external façade was finished with a brick soldier course in a creamy buff-coloured brick, delivering a clean and refined architectural finish.



The roof terrace was finished using a single-ply membrane system, with paving installed on adjustable pedestals to align with the newly formed dormer access doors, creating a seamless transition from the first-floor bedroom.

INTERIOR SPACES

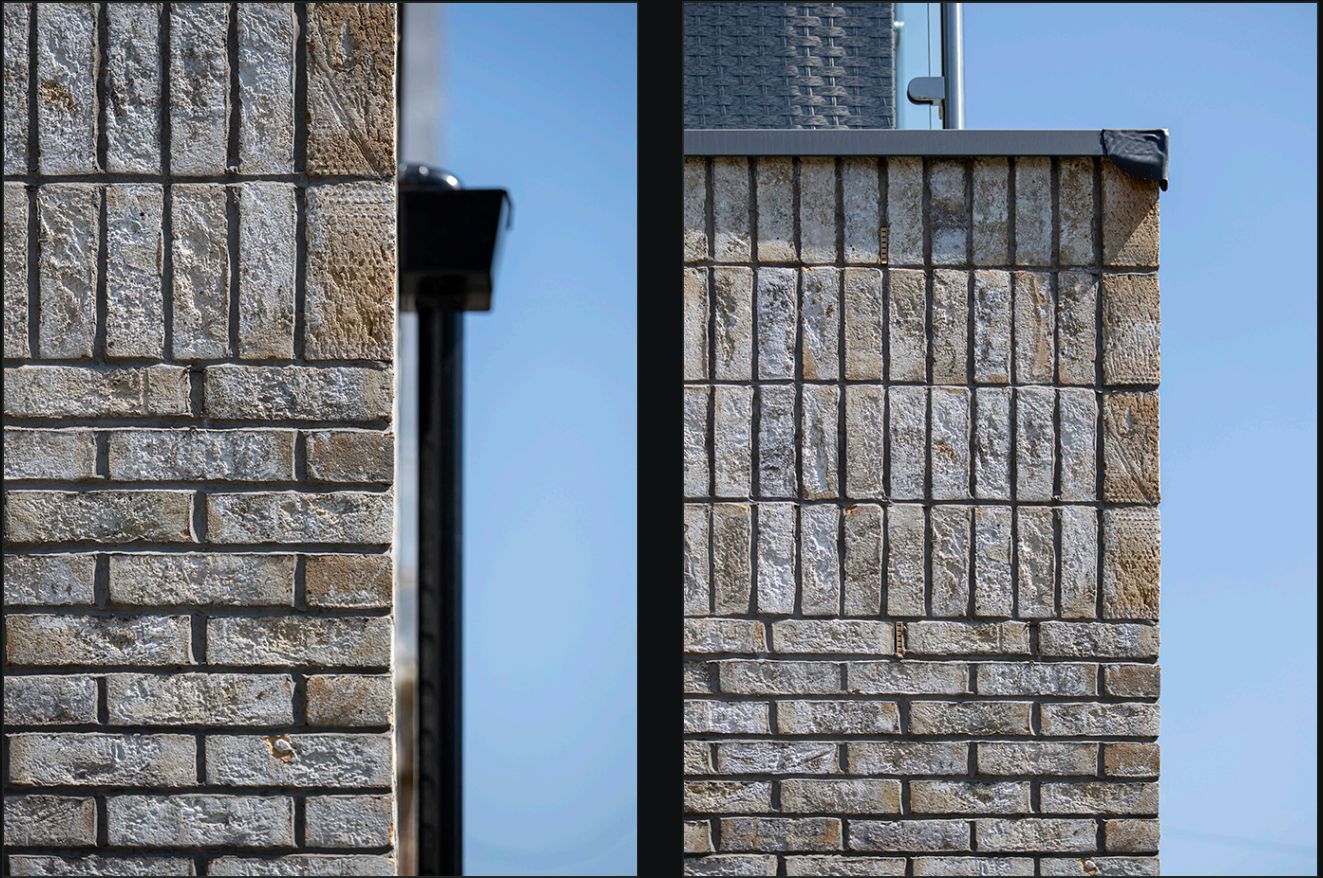




ROOF TERRACE



MATERIALS & CRAFT



KEY DETAILS

- 01** Structural steel supporting front elevation glazing and fixed window
- 02** Brick soldier course in creamy buff-coloured brick
- 03** Walk-on Velux rooflight providing natural light to living space
- 04** Single-ply membrane roof terrace with paving on adjustable pedestals
- 05** Seamless first-floor bedroom to roof terrace connection via dormer doors



*"Innovative design and craftsmanship
— reflecting our commitment to
quality through our passion for
building."*

